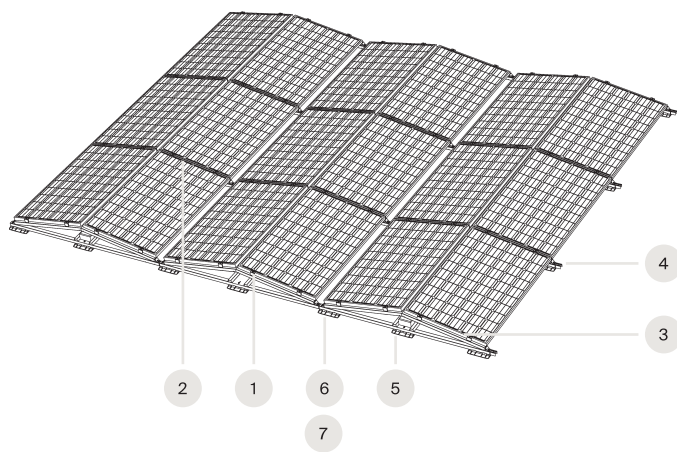
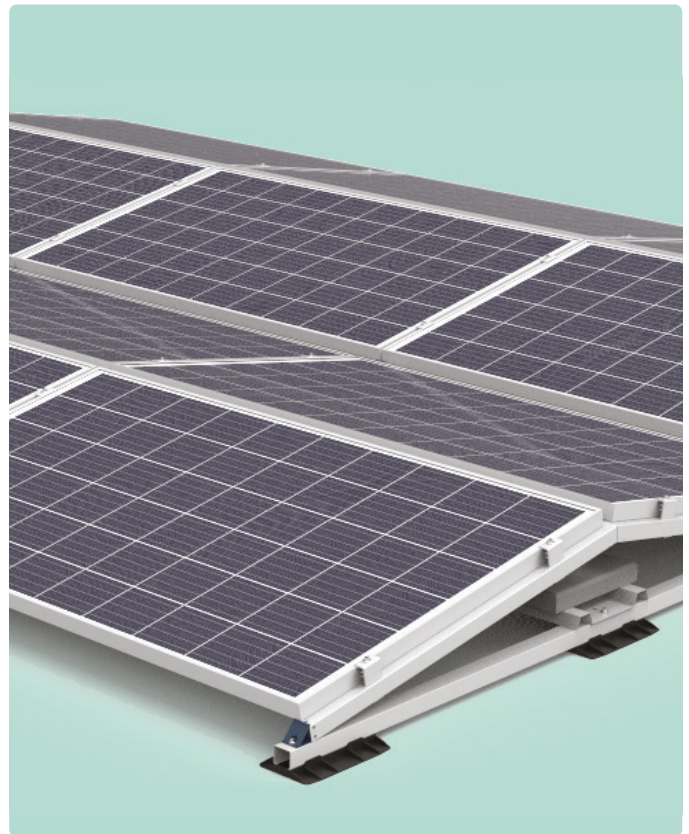


Matrix

Symmetrical series

The Autarco Matrix mounting system has grown into one of the most popular mounting systems for solar panels on flat roofs, based on quality, service and ease of installation. It is ideal for both large and small installations. Thanks to the smart and stable construction, ultra-fast assembly is possible whilst ensuring the solar panels are safely supported.




- + 10-year product warranty
- + Flat roof system
- + Landscape orientation
- + One tool required for installation
- + Suitable for different module thicknesses
- + Install up till 5 degree surface inclination





Optional components

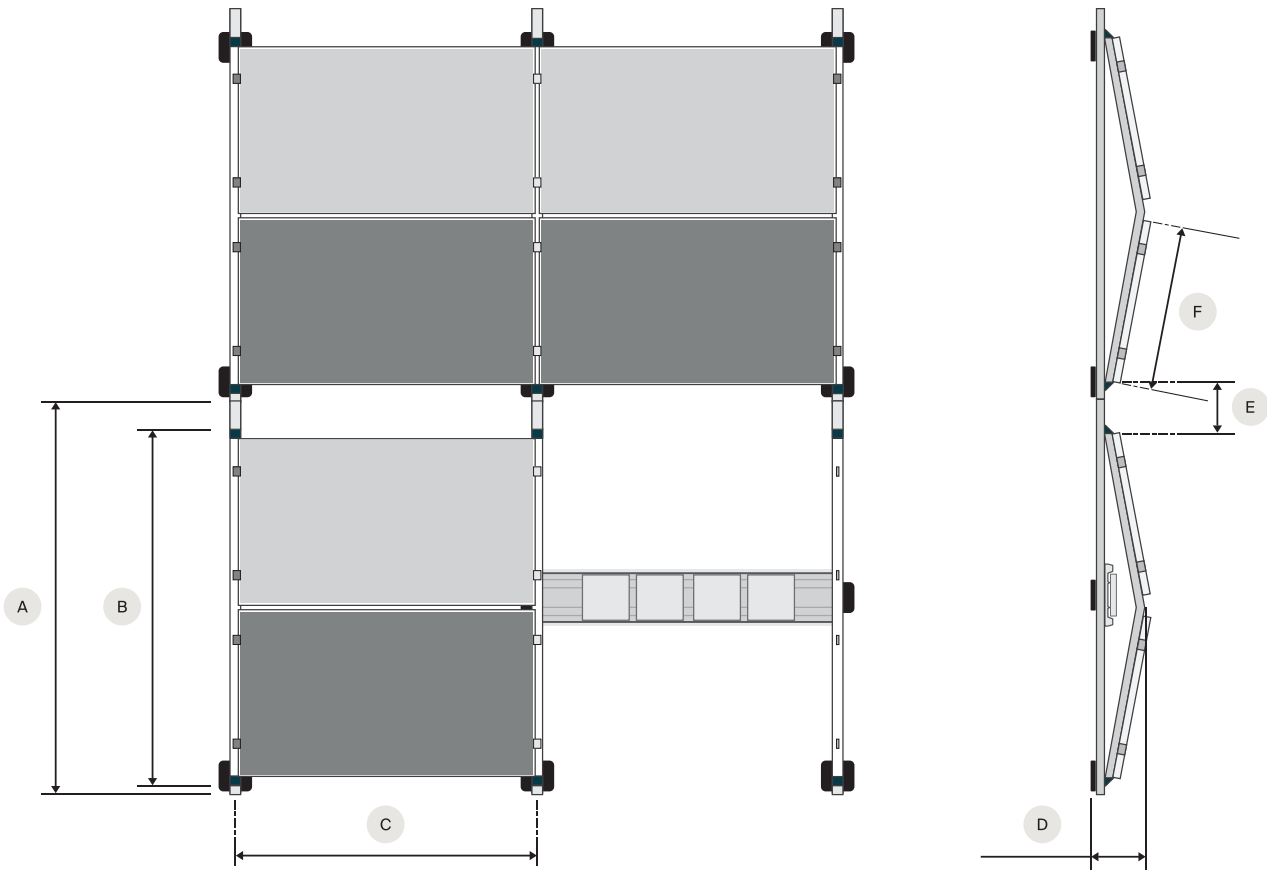
	Rubber block	M3.MRB
	Rubber mat	M3.MRM

Fastenings

	1 End clamp	M3.MMC(B)
	2 Mid clamp	M3.MEC(B)
	Short screw	M3.MSS
	Clamp screw	M3.MCS(B)

System components

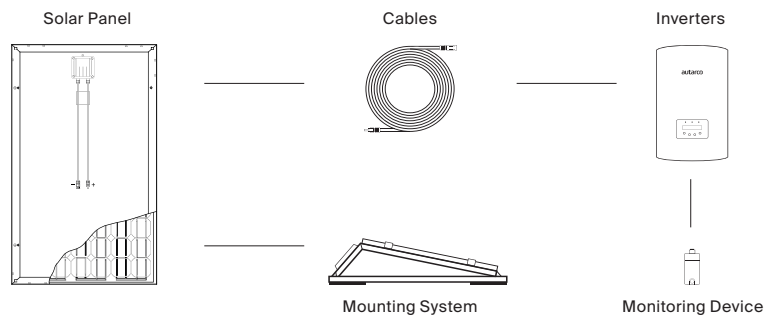
	3 Base unit (without connector)	M3.MBU-2300MS/2500MS
	4 Carrier	M3.MC-10-10-2100/2300/2400
	5 Ballast plate	M3.MBP-1825/1975/2200
	6 Foot	M3.MF
	7 Booster Foot	M3.MBF



A	Base unit (mm)	2200	2300	2300	2500
B	Carrier	MC-10-10-2200	MC-10-10-2300	MC-10-10-2200	MC-10-10-2400
C	Distance (mm)	Panel + 10	Panel + 10	Panel + 10	Panel + 10
D	Distance (mm)	281	281	290	299
E	Walkway (mm)	110	205	110	205
F	Panel width (mm)	max. 1055	max. 1055	max. 1105	max. 1155
	Panel angle	10 °	10 °	10 °	10 °
	Panel type	MHI series	MHI series	MHH series	MHJ, MHL & TBJ series
	Material	Magnelis®, aluminium, stainless steel			

Suitable rooftypes

Flat roofs (Bitumen, PVC, EPDM, TPO); Up to 5 degree surface inclination



The specifications contained in this datasheet may deviate slightly from our actual products due to on-going product improvement and are subject to change at any time without prior notice.