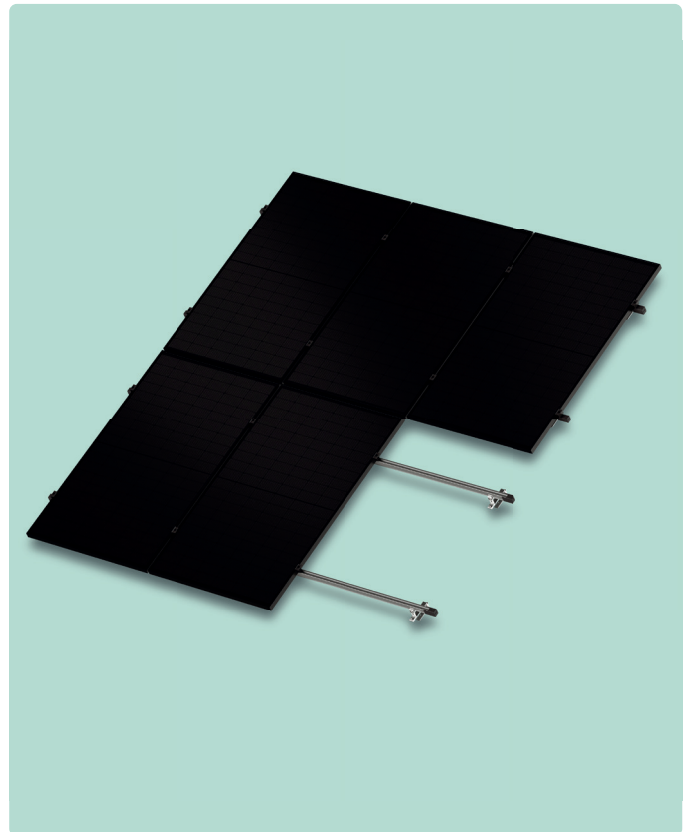


Apex R6

Series

The Autarco Apex R6 mounting system has grown into one of the most popular mounting systems for solar panels on pitched roofs. Thanks to its unique construction, a smart and stable construction with ultra-fast assembly is possible whilst ensuring the solar panels are optimally and safely supported.

- + 10-year product warranty
- + Pitched roof system
- + Landscape or portrait mounting possible with the same hook
- + One tool required for installation
- + Lightweight yet robust



Quality Certificates

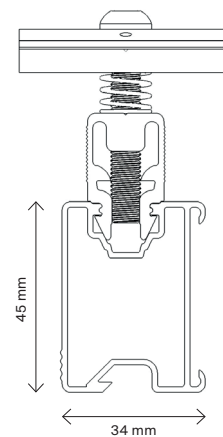
ISO 9001, 14001, 18001
MCS012, NEN7250

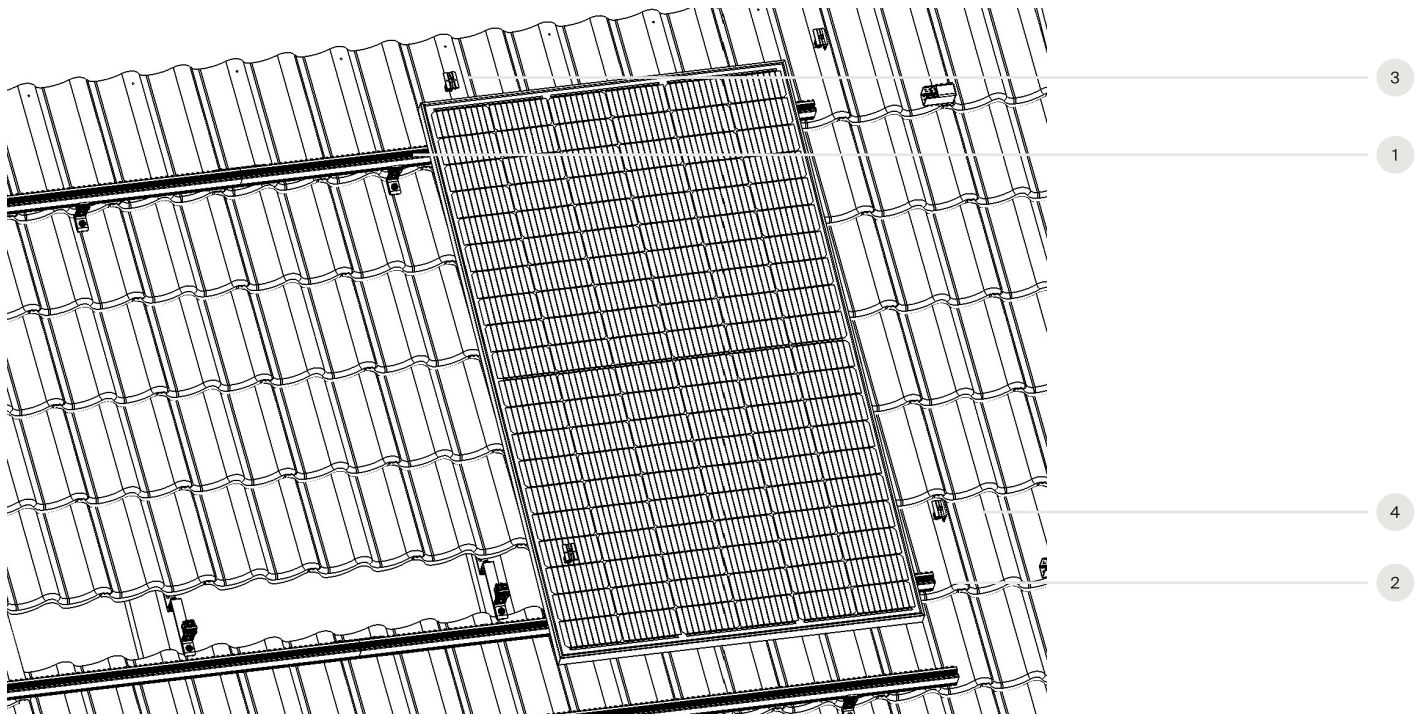


Physical characteristics




Suitable roof pitch	5° to 60°
Material	Aluminium (AL-6005-T5) Stainless steel (304)
Suitable rooftypes	<ul style="list-style-type: none"> + Pitched + Corrugated + Standing seam + Slate + Tiled (fixed or adjustable)

Apex R6 Rail section (mm)





System components

	1	R6 rail	M1.AR6L3300 / 3580 / 4350 / 4730
	2	End cap	M1.AR6CAP
		Splice connector	M1.AR6RJ

Fastenings

	3	Middle clamp	M1.AR6(B)MC
	4	End clamp	M1.AR6(B)EC

Hooks

	Adjustable aluminium hook (Suitable for tile width 31 to 47 mm)	M2.AR6THX1	Portrait or landscape installation
	Adjustable aluminium hook XL (Suitable for tile width 44 to 60 mm)	M2.AR6THX1.XL	Portrait or landscape installation
	Adjustable aluminium screw hook (Suitable for tile width 65.5 to 81.5 mm)	M2.AR6THSX1	Portrait or landscape installation
	Waveclip for corrugated roofs	M2.AR6WC	Landscape installation
	Universal L-Hook connector	M2.AR6LHOOK	Portrait or landscape installation
	Bracket for standing seam roofs	M2.AR6SSB	Portrait or landscape installation
	Steel roof hook #2 for tile roofs	M2.AR6TH2	Portrait installation
	Steel roof hook #4 for tile roofs	M2.AR6TH4	Landscape installation
	Steel roof hook #5 for slate roofs	M2.AR6TH5	Portrait installation
	Hangerbolt for steel purlins	M2.AR6HBS	Portrait or landscape installation
	Hangerbolt for wooden purlins	M2.AR6HBW	Portrait or landscape installation

The specifications contained in this datasheet may deviate slightly from our actual products due to on-going product improvement and are subject to change at any time without prior notice.